

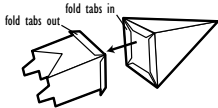
**Instructions**

For ages 7 and older. You will need: scissors, x-acto knife or razor blade, and clear tape. Also, to decorate the church you'll need crayons, markers, or colored pencils.

1. Color the building. Write your name and phone number here: →

2. Use scissors or an x-acto knife to cut out the church's three parts on the solid lines. In the roof cut out two small slots for the steeple and one large money slot (an adult may want to cut the slots for young builders). It is easiest to cut out the money slot after folding the roof.

3. Fold on all dashed lines (use a straight edge to get crisp folds.) Tape the steeple top and bottom into shape. Fold the tabs in on the steeple top and fold the tabs out on the steeple bottom. Snap the steeple parts together:



4. Fold up the building, taping the tabs as you go. (Taping the inside looks better but taping the outside is easier.) Don't tape the bottom yet.

5. Insert the steeple tabs into the roof slots and tape on the inside, then close up the bottom and tape shut.

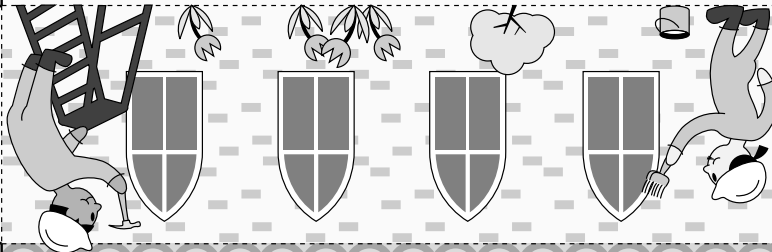
Put the church where people will see it. Empty it regularly (it's pretty easy to shake out the money if you prefer not to cut the tape) and send a check to QWI. Thanks!

**Quaker Workcamps International  
Collection Box**

This collection box is maintained by:

name \_\_\_\_\_

phone \_\_\_\_\_



**Help Rebuild Burned Churches**  
In the last three years over 150 small rural churches have been destroyed by arson. Quaker Workcamps International organizes volunteers of all faiths to rebuild them.

Please insert a donation to support our work. Or send checks and inquiries to:  
Quaker Workcamps International  
1225 Geranium Street  
Washington D.C. 20012

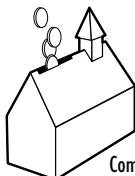
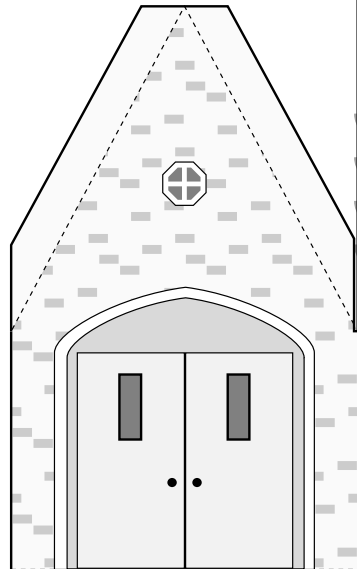
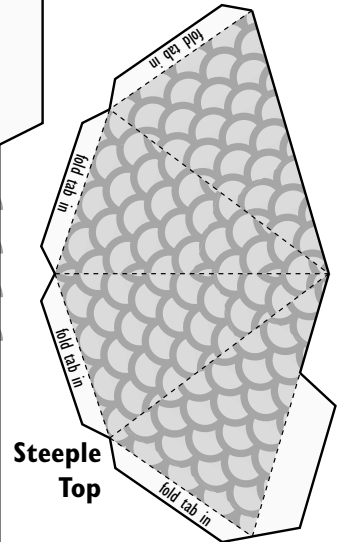
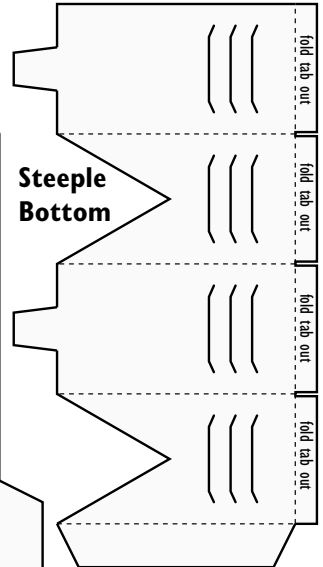
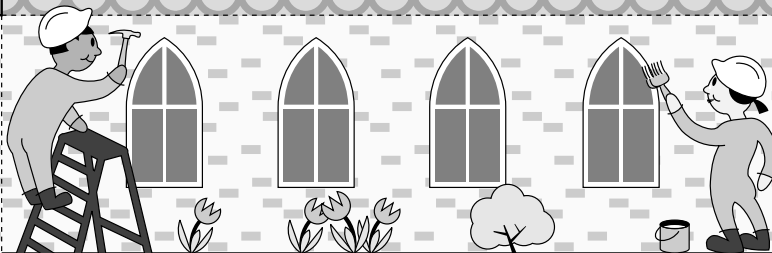
Insert steeple tabs into these slots.

**Help Rebuild Burned Churches**

cut out this slot after folding

In the last three years over 150 small rural churches have been destroyed by arson. Quaker Workcamps International organizes volunteers of all faiths to rebuild them.

Please insert a donation to support our work. Or send checks and inquiries to:  
**Quaker Workcamps International**  
1225 Geranium Street  
Washington D.C. 20012



Completed Church

collection box © QWI 1998