

INFO-MAPS

FROM PIAG

Palestine - Israel Action Group of
Ann Arbor Friends Meeting (Quakers)

These two-sided cards show Israel's takeover
of Palestinian land since 1946.

Only fragments remain under Palestinian
control, separated by over 190 "settlements"
- all illegal under international law.

The splintered "state" envisioned by
Ariel Sharon & Ehud Olmert would not be viable.

Info-Maps can spark discussion & build pressure
for a just and sustainable future.

**CARRY INFO-MAPS IN YOUR POCKET.
TAKE INFO-MAPS TO MEETINGS.
DISTRIBUTE & DISPLAY!**

HOW TO ORDER:

Info-Maps are available at cost - 7¢ each.
Min. order: 100 4"x 6" cards / \$7 (+\$2 mailing).
Write check to AAFM. Mail to PIAG, 1012 Pomona,
Ann Arbor MI 48103. Info: <agr1@mac.com> or
WWW.QUAKERPIAG.BLOGSPOT.COM

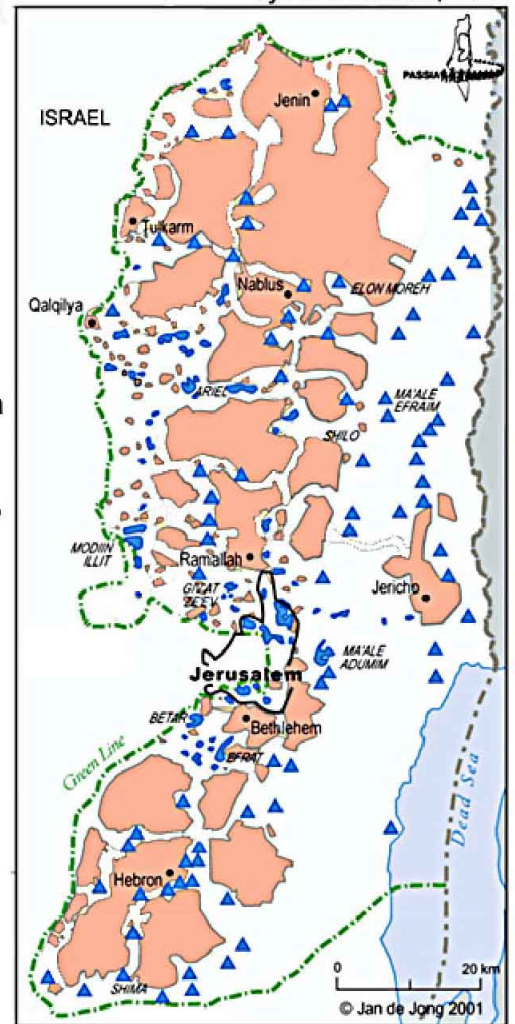
Fragmented Palestinian State Proposed for the West Bank by Ariel Sharon, 2001

"Everybody has
to move, run
and grab
as many hilltops
as they can ...
Everything we
don't grab will
go to them."
Ariel Sharon, 1998

"We'll make a
pastrami sandwich
of them. We'll
insert a strip of
Jewish settlement,
in between the
Palestinians, and
then another
strip of Jewish
settlement, right
across the West
Bank, so that in
25 years time,
neither the United
Nations, nor the
United States,
nobody, will be
able to tear it
apart."

Ariel Sharon, 1973
to Winston Churchill III

Info-Card:
PIAG <agr1@mac.com>



Illegal Settlements Palestinian Bantustans

PALESTINIAN LOSS OF LAND 1946 TO 2005

